

Context help in Bioclipse

Egon Willighagen 

Published July 13, 2006

Citation

Willighagen, E. (2006, July 13). Context help in Bioclipse. *Chem-bla-ics*. <https://doi.org/10.59350/94e4t-2q855>

Keywords

Jmol, Bioclipse

Abstract

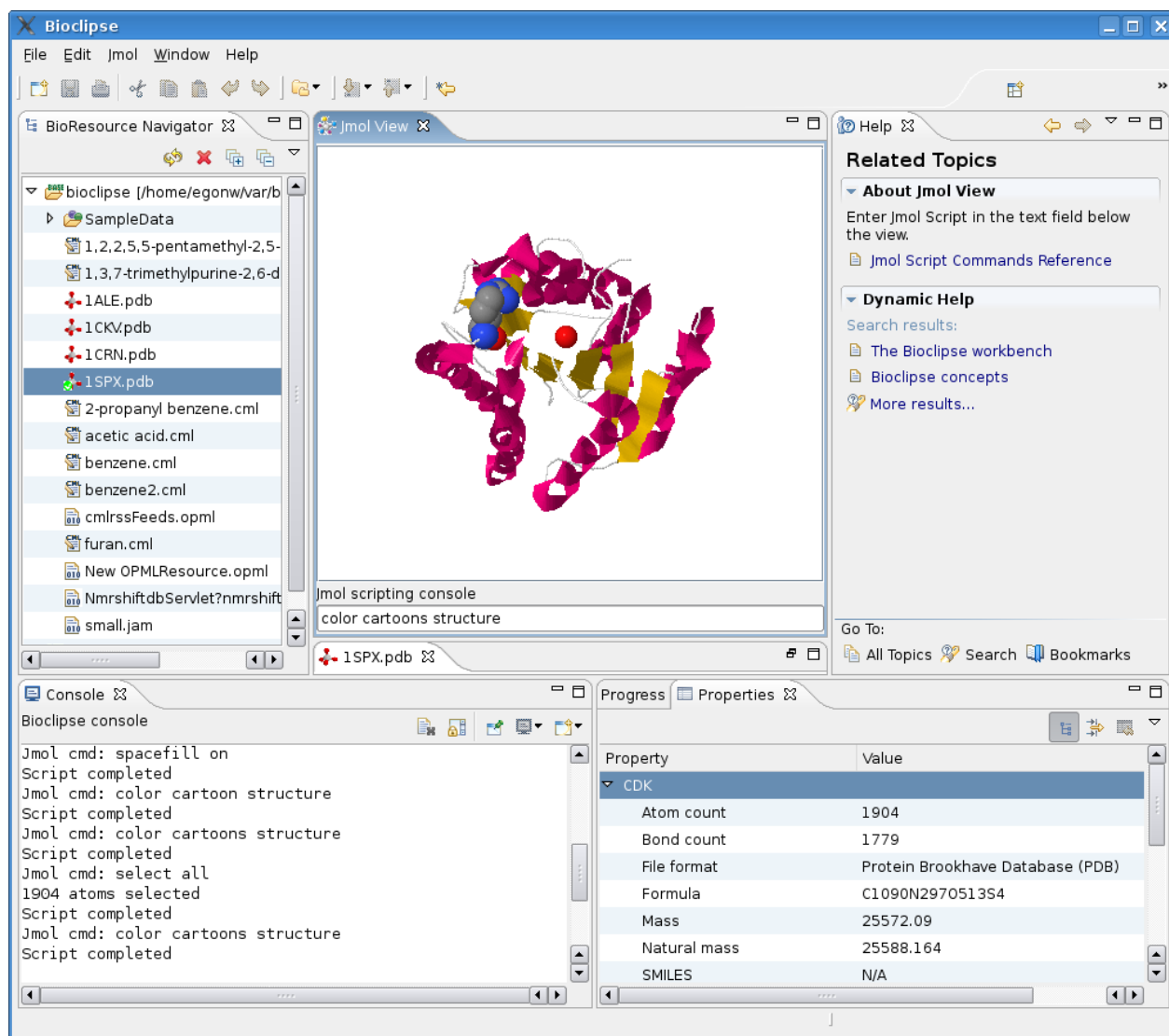
The Eclipse Rich Client Platform (RCP) is very powerfull, and takes a lot of architectural things of your hand when developing a bio- and chemoinformatics GUIs. Bioclipse is based on it. One thing the RCP offers is a Help View which works with plain (X)HTML files, and one neat feature is the context help. It is help shown in the Help View when one focused on a specific GUI element.

Copyright

Copyright © Egon Willighagen 2006. Distributed under the terms of the [Creative Commons Attribution 4.0 International License](#), which permits unrestricted use, distribution, and reproduction in any medium, provided the original author and source are credited.

The [Eclipse Rich Client Platform \(RCP\)](#) is very powerful, and takes a lot of architectural things of your hand when developing a bio- and cheminformatics GUIs. [Bioclipse](#) is based on it. One thing the RCP offers is a Help View which works with plain (X)HTML files, and one neat feature is the context help. It is help shown in the Help View when one focused on a specific GUI element.

As an example, the below figure gives the context help for the JmolView in the [Jmol](#) plugin ([bc_jmol](#)) plugin for Bioclipse:



On the right side of the Jmol view (showing [1SPX](#)) is the Help View, showing the context help for the Jmol View pointing to the 'Jmol Script Commands Reference'.